






BONOLATA
Garden

COME HOME TO NATURE'S EMBRACE
WHERE LIFE FINDS HARMONY



ELEGANCE SPRAWLED ACROSS NATURE'S CANVAS

Located in lush greenery in Baruipur, Kolkata, Bonolata Garden and Geetanjali Garden offer spacious 1, 2 & 3 BHK apartments designed for comfort and tranquility. Experience a perfect balance of luxury, community and contemporary amenities — all in a peaceful, natural setting.

-  Premium Residential Complex
-  1/2/3 BHK 3 Side Open Apartments
-  Vastu Compliant
-  Landscape Garden
-  World-Class Amenities

BONOLATA
Garden



HOMES NESTLED IN NATURE, CRAFTED FOR COMFORT

Nestled in the heart of Baruipur's serene landscape, Bonolata Garden and Geetanjali Garden are envisioned as sanctuaries that merge urban comfort with the rejuvenating power of nature. Set amidst lush greenery, the project is designed to promote a lifestyle that is not only modern and convenient but also deeply connected to the environment.



AERIAL VIEW



Actual Impression

THE BEST PLACE FOR...

Bonolata Garden and Geetanjali Garden bring together inspired design & sophisticated living.

The result is a home accompanied by its natural surroundings.

MY INDEPENDENCE



MY SECURITY



MY FAMILY



MY RECREATION

BIRD'S EYE VIEW



Actual Impression



A GARDEN WITHIN, A WORLD BEYOND

Step into your own sanctuary — where nature isn't just outside your window, it's part of your everyday life. The inbuilt garden spaces at Bonolata Garden and Geetanjali Garden are thoughtfully designed to bring you closer to green serenity. From morning yoga under the trees to quiet evening strolls along landscaped pathways, these lush, internal green zones offer a perfect retreat from the rush of city life — right at your doorstep.



LANDSCAPE GARDEN



Actual Impression





CRAFTED FOR COMFORT, DESIGNED FOR LIVING

At Bonolata Garden and Geetanjali Garden, amenities aren't just add-ons — they are thoughtfully curated experiences that enhance your lifestyle every day. From well-equipped fitness zone and serene garden sit-outs to secure play areas for children and peaceful corners for seniors, every space is designed to cater to your body, mind, and spirit.

GYMNASIUM





✿ Spacious Library to expand knowledge

✿ Joggers' Track

✿ Indoor Games Room for fun-filled gatherings

✿ Refreshing Swimming Pool for unwinding



SWIMMING POOL



Actual Impression



URBAN CONVENIENCE MEETS NATURAL TRANQUILITY

Strategically situated just 10 minutes from Garia Metro Station, Bonolata Garden & Geetanjali Garden offer seamless connectivity to Kolkata and surrounding areas. The well-developed neighborhood includes essential amenities and easy access to shopping, schools, and healthcare, making it the ideal address for a convenient lifestyle amidst nature.



LOCATION MAP

KEY DISTANCE

- Ramkrishna Future Foundation - 260 Mtrs
- Baruiপুর College - 0.5 Km
- E M Bypass - 0.75 Km
- Baruiপুর Railway Station - 2.0 Km
- Baruiপুর Bazaar - 2.1 Km
- Baruiপুর Super Speciality Hospital - 2.5 Km
- Garia Metro Station (Kavi Nazrul) - 11.0 Km
- R N Tagore Hospital - 17.1 Km
- CBSE, ICSE & WBBSE School is located near the Project.

BONOLATA
Garden



GEETANJALI
Garden



DRIVE WAY VIEW



Actual Impression

SPACIOUS BEDROOM



LIBRARY



BONOLATA GARDEN



FLOOR PLAN



FLOOR PLAN

BLOCK-1

TYPICAL 1ST TO 4TH FLOOR



GROUND FLOOR

UNIT TYPE	FLAT TYPE	CARPET AREA (SQ.FT.)	VER. AREA (SQ.FT.)	CARPRT WITH VER. (SQ.FT.)	COVEED AREA (SQ.FT.)
D	3 BHK+2 TOI	855	52	907	1025

TYPICAL FLOOR

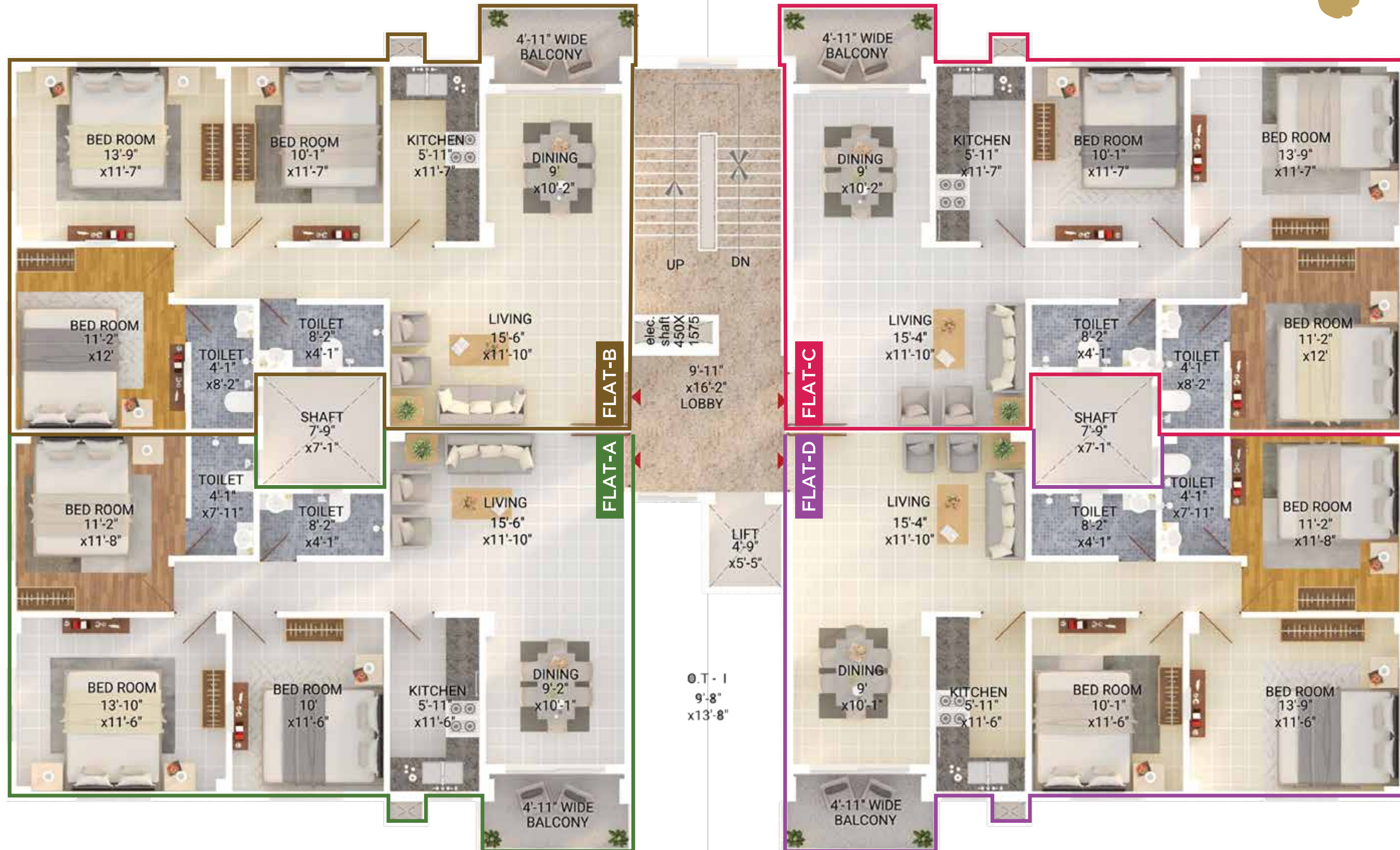
UNIT TYPE	FLAT TYPE	CARPET AREA (SQ.FT.)	VER. AREA (SQ.FT.)	CARPRT WITH VER. (SQ.FT.)	COVEED AREA (SQ.FT.)	BUILT-UP AREA (SQ.FT.)	SUPER BUILT-UP AREA (SQ.FT.)
A	3 BHK+2 TOI	862	48	910	1019	1192	1490
B	3 BHK+2 TOI	860	50	910	1023	1197	1496
C	3 BHK+2 TOI	878	59	937	1120	1310	1638
D	3 BHK+2 TOI	860	50	910	1023	1197	1496
E	3 BHK+2 TOI	864	48	912	1020	1193	1491
F	2 BHK+2 TOI	637	48	685	762	892	1115
G	2 BHK+2 TOI	637	38	675	765	895	1118



FLOOR PLAN

BLOCK-2

TYPICAL 1ST TO 4TH FLOOR



UNIT TYPE	FLAT TYPE	CARPET AREA (SQ.FT.)	VER. AREA (SQ.FT.)	CARPRT WITH VER. (SQ.FT.)	COVEED AREA (SQ.FT.)	BUILT-UP AREA (SQ.FT.)	SUPER BUILT-UP AREA (SQ.FT.)
A	3 BHK+2 TOI	860	50	910	1022	1124	1405
B	3 BHK+2 TOI	867	50	917	1031	1134	1418
C	3 BHK+2 TOI	869	50	919	1033	1136	1420
D	3 BHK+2 TOI	854	50	904	1018	1120	1400



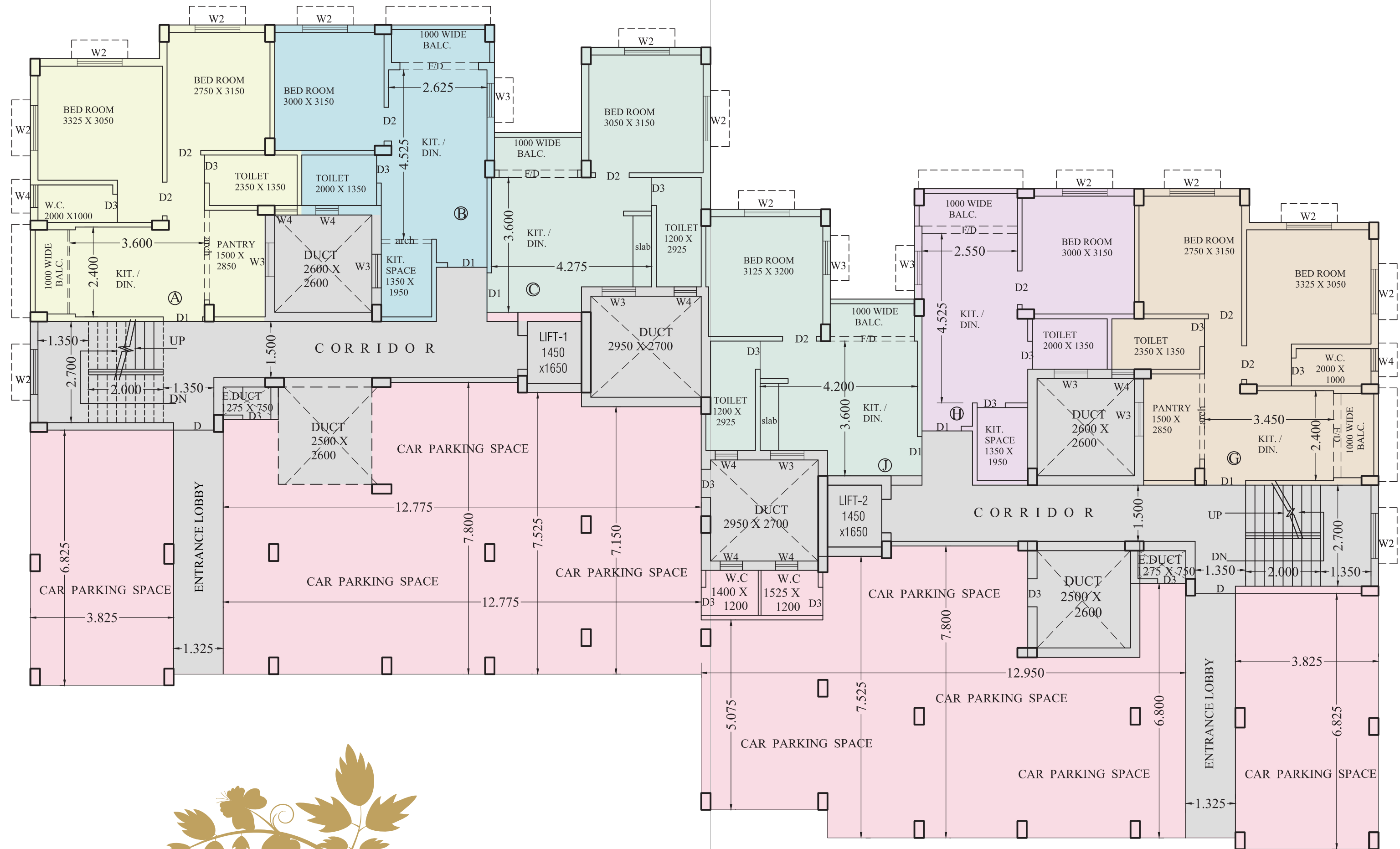
GEETANJALI GARDEN

FLOOR PLAN



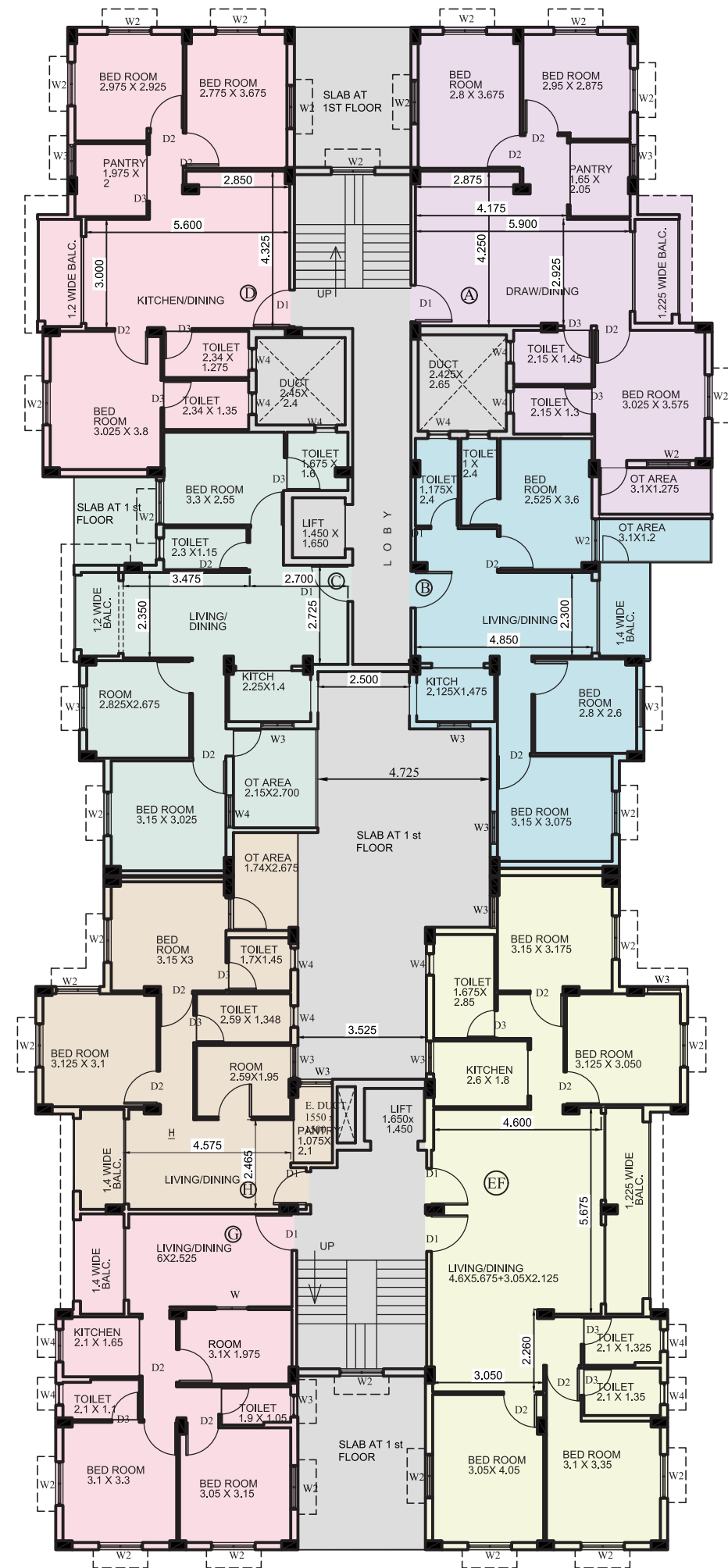
FLOOR PLAN

BLOCK-A | GROUND FLOOR



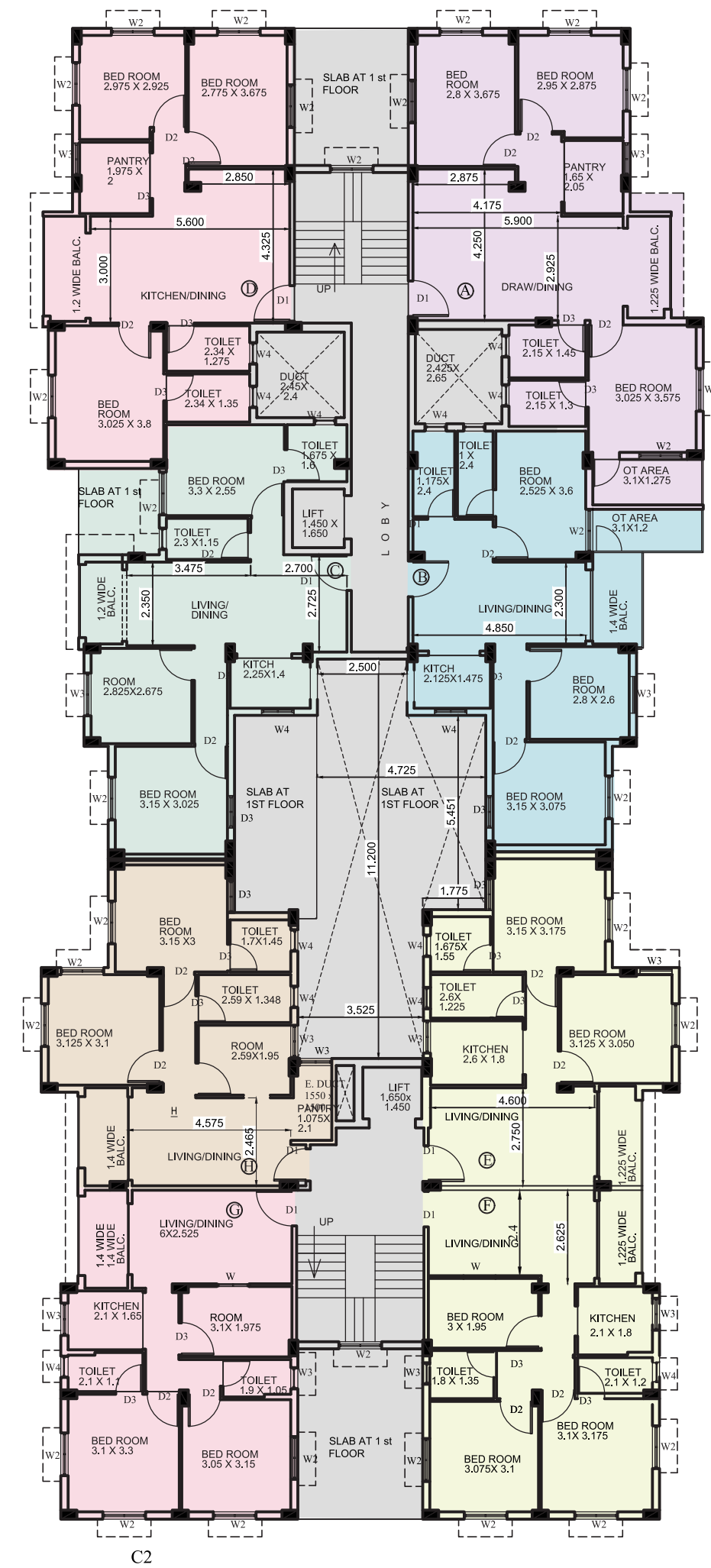
FLOOR PLAN

BLOCK-C | 1ST FLOOR



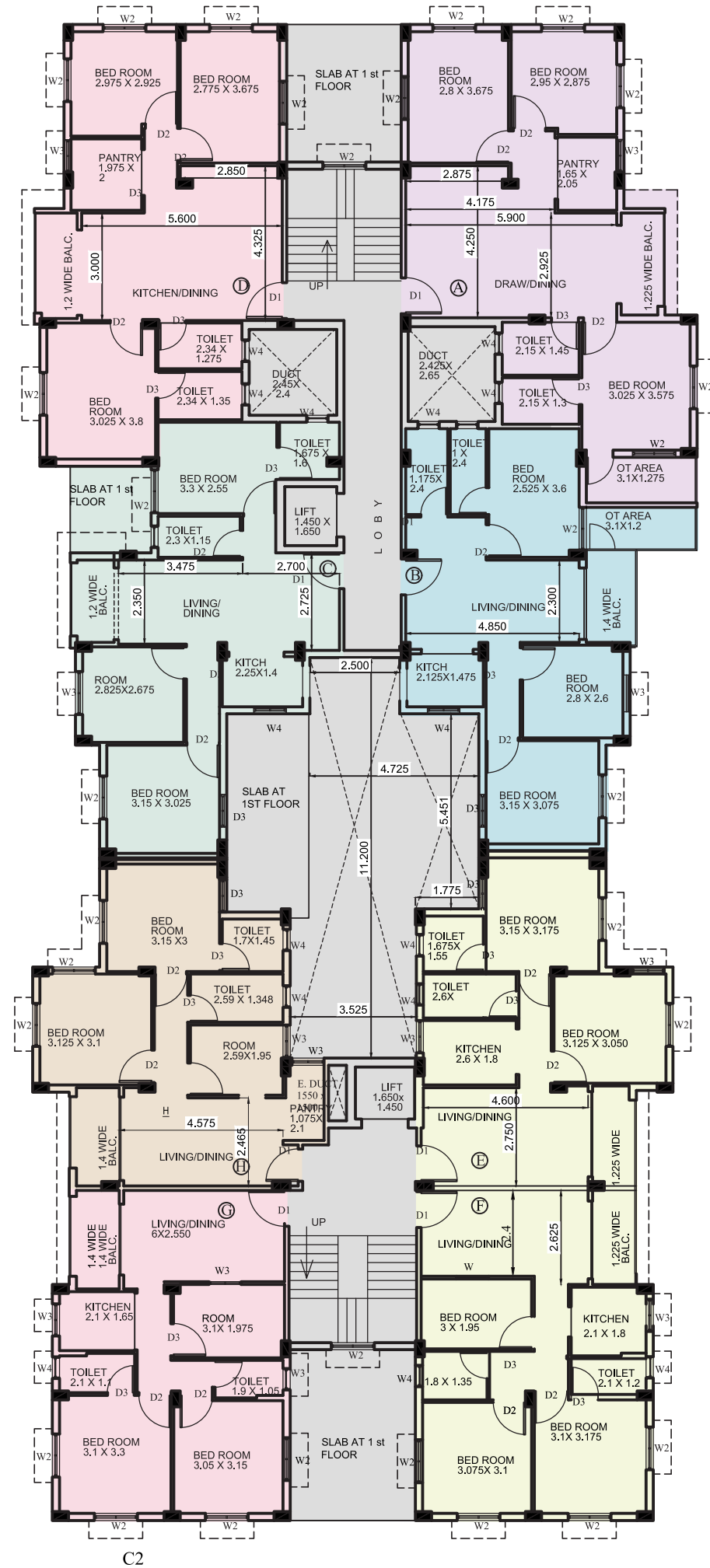
FLOOR PLAN

BLOCK-C | 2ND FLOOR



FLOOR PLAN

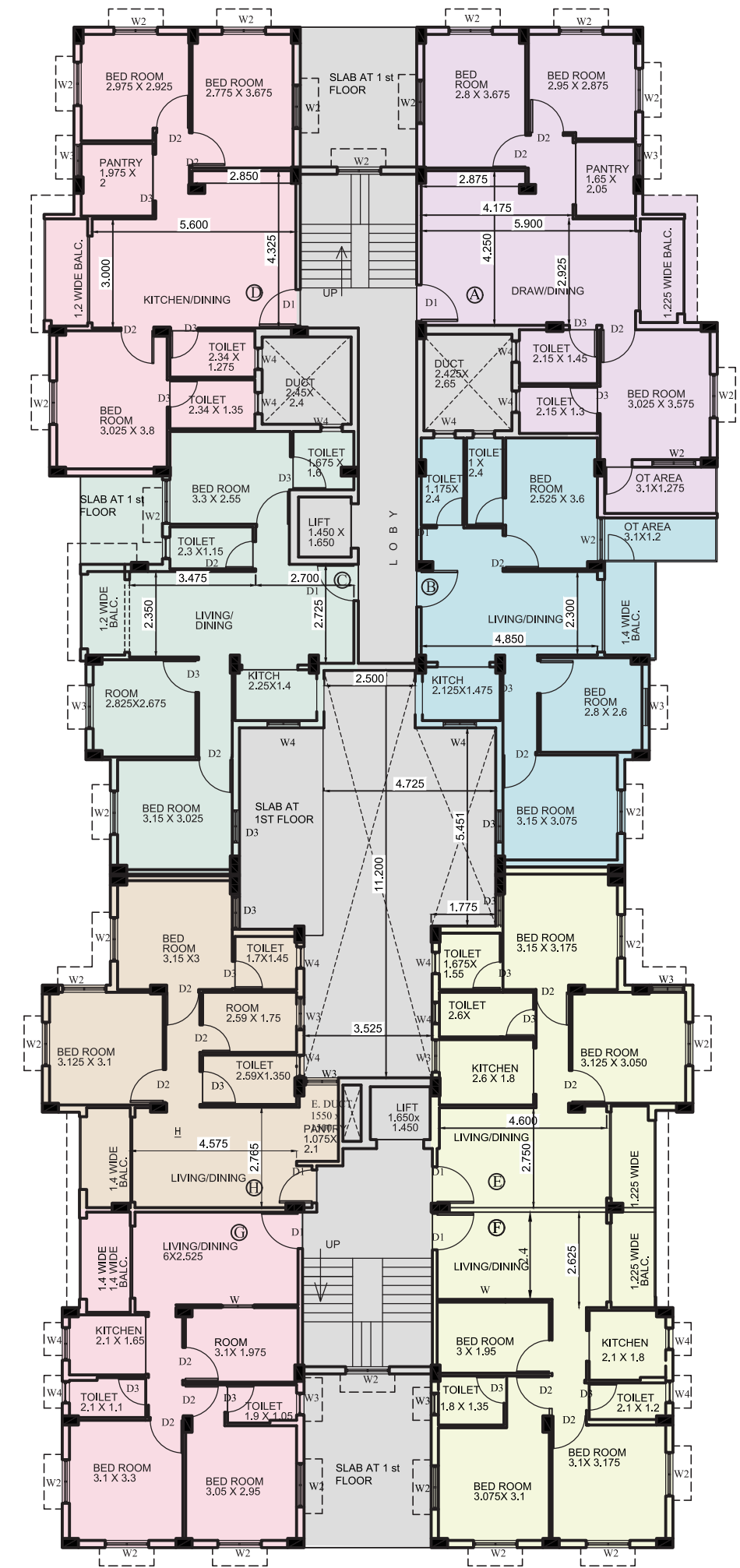
BLOCK-C | 3RD FLOOR



C2

FLOOR PLAN

BLOCK-C | 4TH FLOOR

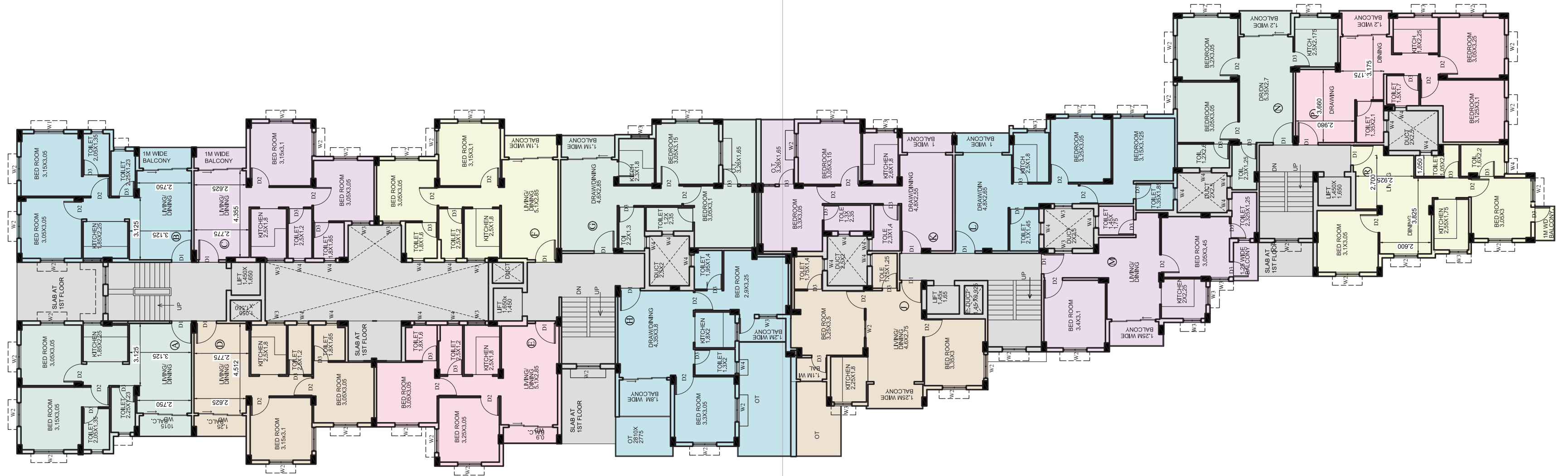


C2



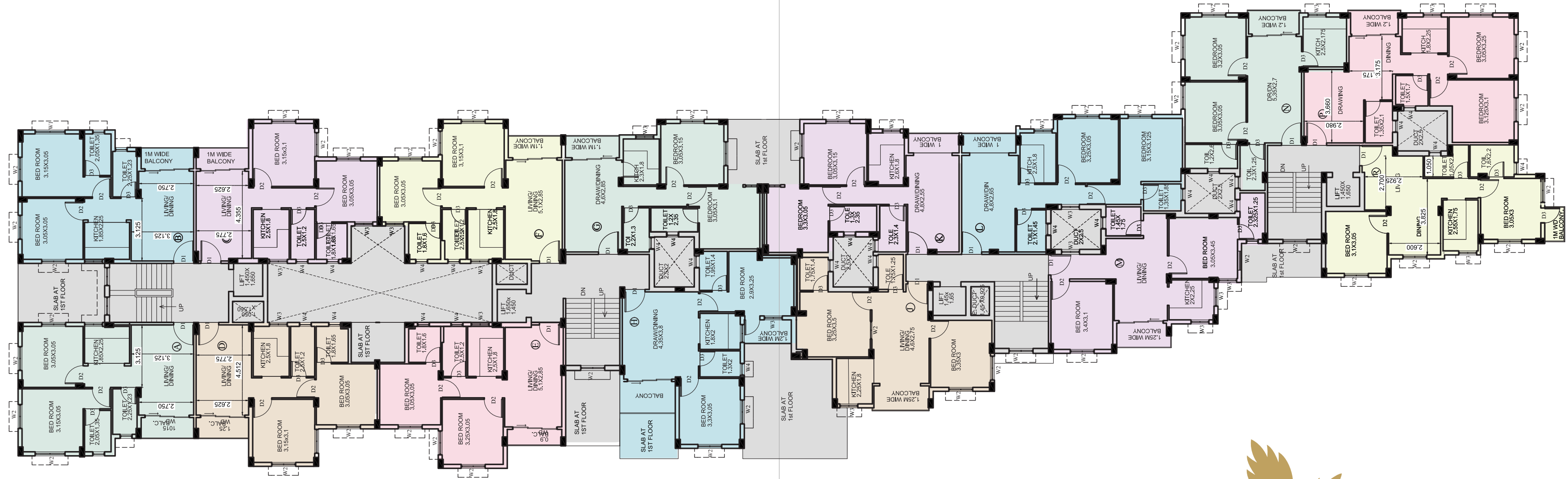
FLOOR PLAN

BLOCK-F | 1ST FLOOR



FLOOR PLAN

BLOCK-F | TYPICAL 2ND TO 4TH FLOOR



COMMUNITY HALL



24

SPECIFICATIONS



STRUCTURE

RCC with bricks wall.



FLOORING

Living & Dining: Vitrified tiles size 48"X32".

All Bedrooms: Vitrified tiles size 48"X32".

Kitchen: Vitrified tiles size 48"X32".



KITCHEN

Slab: Kitchen platform with granite top.

Fixtures: S.S. Sink, Hot & Cold water point.

Cladding: Ceramic tiles full height in counter.



DOORS

Decorative panel for all doors.

Entrance door for internal with lock.

WINDOW

Powder coated / anodized aluminum sliding window.



WALL

Internal: Putty finish.

External: Finish with weather coat paint with water proofing compound.



TOILETS

Floor: Anti skid ceramic tiles.

Fittings: CP fitting in Jaquar company.

Water Points: Hot and cold water points and provision for geyser in both toilets.

Wall: Ceramic tiles upto 7-ft height from floor level.



STAIRCASE & FLOOR LOBBY

Good quality Granite in staircases & floor lobby.



ELECTRICAL

Switches: Modular switches of Achor Company.

MCB: MCB of Achor Company.

Wiring: Concealed PVC copper wiring.

TV Point: Provision in living room.

Electrical Point: Adequate light and fan points.

AC Point: AC point in all bedroom and living dining area.



Founded in 2005, G.S. Procon Pvt. Ltd. is a trusted name in high-quality, affordable housing solutions. Led by Sri Goutam Saha, the company has delivered numerous prestigious projects across Kolkata, including Bypass Valley, Writtik Complex, Geetanjali Complex, and more. Committed to excellence, G.S. Procon ensures top-tier materials and craftsmanship in every development, turning dreams into reality.



BYPASS VALLEY



WRITTIK COMPLEX



GEETANJALI COMPLEX

SITE ADDRESS

Bonolata Garden

Amtala Road, Baruipur, Kolkata - 700 144
P.O. - Purandarpur, Pin - 743 610

DEVELOPED BY

G.S. Procon Pvt. Ltd.

388, Barakhola, Mukundapur, Kolkata - 700 099
Mob: +91 98754 52389 / 91238 01706

STRATEGIC PARTNER



 **033 6812 0246**

ARCHITECT

Sanyalson Associates Consultant Pvt. Ltd.

P-157, Kanungo Park, Kolkata - 700 084